



GMT MONTHLY MEMBERSHIP PROGRESS REPORT

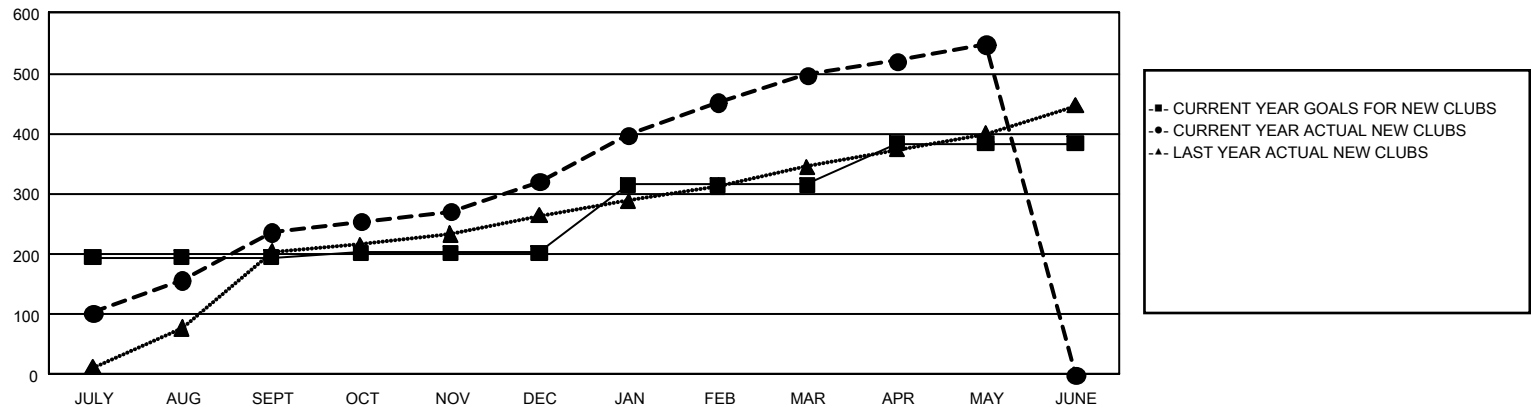
GAT Constitutional Area 6 - South Asia and Middle East

Results as of: 5/31/2025

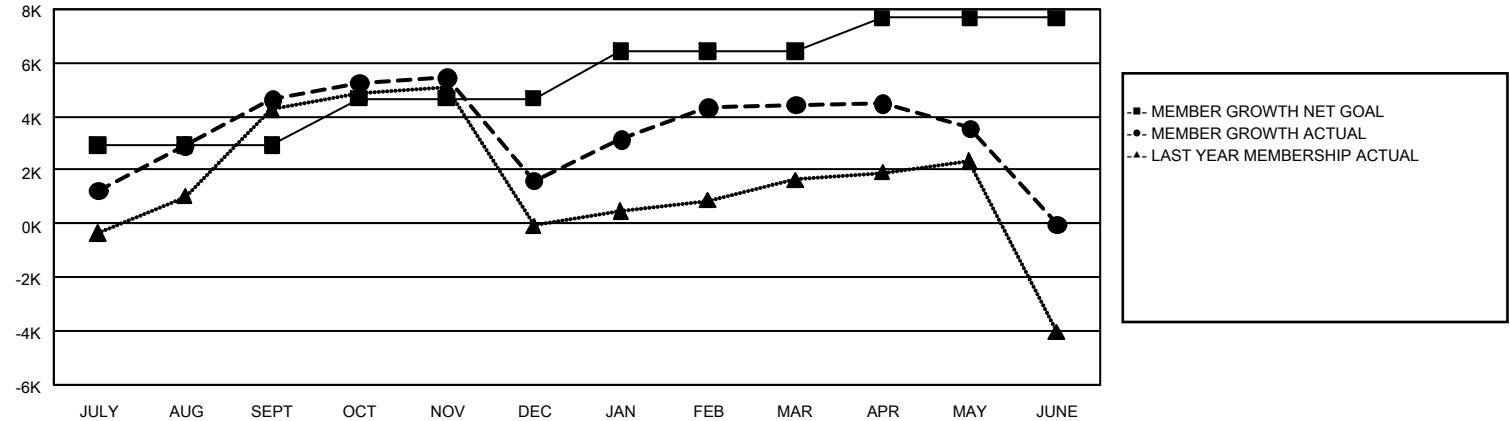
REPORT DOES NOT INCLUDE CLUBS IN UNDISTRICTED AREAS.

Clubs				Members			
RESULTS FOR 2024-2025				RESULTS FOR 2024-2025			
QUARTER	NEW CLUB GOAL	NEW CLUBS	DROPPED CLUBS	QUARTER	MEMBER GROWTH NET GOAL	MEMBER GROWTH ACTUAL	DROPPED MEMBERS ACTUAL (including transfers)
JULY/AUG/SEPT	195	237	57	JULY/AUG/SEPT	2,933	9,801	3,934
OCT/NOV/DEC	7	84	148	OCT/NOV/DEC	1,737	5,324	7,718
JAN/FEB/MAR	113	176	66	JAN/FEB/MAR	1,772	6,785	2,949
APR/MAY/JUNE	68	51	16	APR/MAY/JUNE	1,228	2,522	2,891

GOALS AND ACTUAL NEW CLUBS CUMULATIVE



GOALS AND ACTUAL MEMBERS CUMULATIVE



DROPPED CLUBS: 285		2,376 CLUBS OF 4,379 ADDED 1 OR MORE NEW MEMBERS	<u>GENDER DISTRIBUTION</u>	
			MALE	68,444 (71.77%)
			FEMALE	26,856 (28.16%)
<u>DROPPED MEMBERS</u>		CLICK HERE FOR CUMULATIVE MEMBERSHIP DATA		
DECEASED	111		TOTAL FAMILY UNIT MEMBERS 46,827	
CLUB CANCELLED	5,067			
OTHER	12,232		FAMILY MEMBERS PAYING HALF DUES 31,987	
TOTAL	17,410			